

How To Remote Desktop – connect to Windows via Windows

Firstly, on your workstation, open command prompt by going to start menu (windows key) and typing in cmd.



In the command prompt window, type ipconfig and make note of the ethernet adapter's IPv4 Address (should be 128.97.xxx.xxx). You will use this IPv4 address when setting up the remote desktop client. If you are unable to obtain this information, contact support.

```
C:\Windows\system32>ipconfig

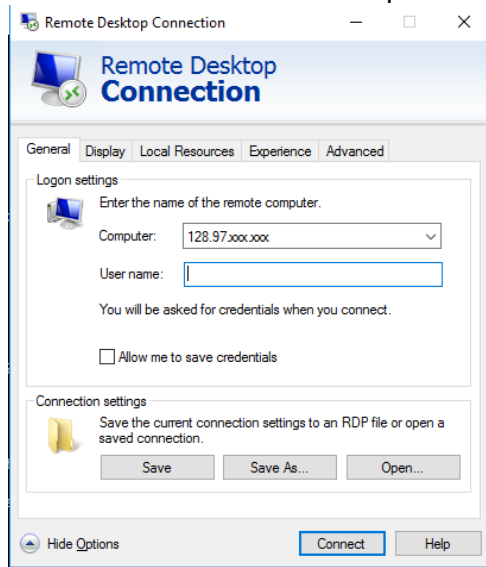
Windows IP Configuration

Ethernet adapter Ethernet:

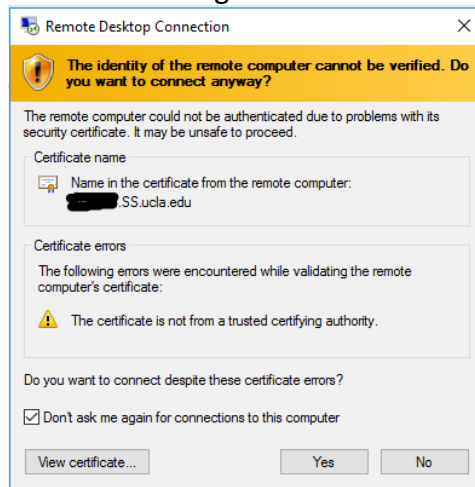
    Connection-specific DNS Suffix  . : sscnet.ucla.edu
    Link-local IPv6 Address . . . . . :
    IPv4 Address. . . . . : 128.97. .
    Subnet Mask . . . . . :
    Default Gateway . . . . . :
```

On the remote computer (Windows) –

1. Download and install UCLA BOL VPN client, then connect to campus VPN per the instructions below
 - a. Instructions and download link:
https://help.bol.ucla.edu/kb_view.do?sysparm_article=kb0010923
2. Go to start menu by clicking the windows icon or pressing the windows key on your keyboard, and type “Remote Desktop Connection.”
3. Open Remote Desktop Connection.
 - a. Under “Computer:” type in the IPv4 address obtained earlier, then expand the down arrow next to “Show Options”



- b.
- c. Under “User name:” type in SS\USERNAME, then hit “Connect”
- d. A Windows Security dialogue box will appear prompting you to enter your password. Type in your account password and select “OK”
- e. You may get a security certificate warning dialogue box. Check the box that says “Don’t ask me again for connections to this computer” and then click “OK”



4. Success. Otherwise, please contact the support desk for assistance.